


Panasonic Broadcast Mechanical Parts List

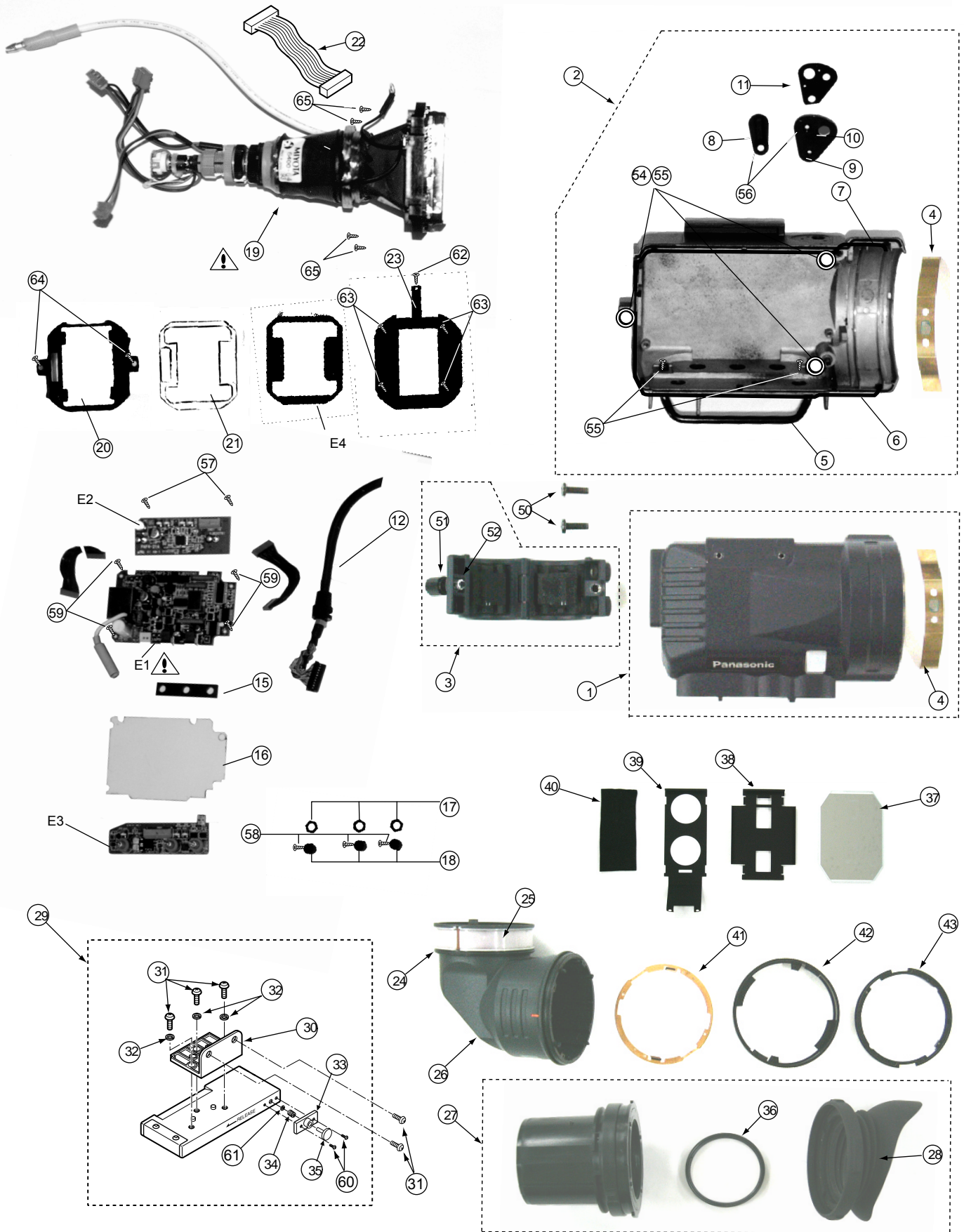
MODEL: **AJ-HVF21G / HVF27BG**

Note:

1. *Be sure to make your orders of replacement parts according to this list.
2. Unless otherwise specified, all resistors are in OHMS, K=1,000 OHMS, all capacitors are in MICROFARADS (μ F), P= μ μ F.
3. The P.C. Board unit marked with "■" shown below the main assembled parts.
4. The parts marked with (E) on the exploded view show the electric parts.
5. **IMPORTANT SAFETY NOTICE**
Components identified with the mark Δ have the special characteristics for safety. When replacing any of these components, use only the same type.
6. The marking (RTL) indicates the retention time is limited for this item.
After the discontinuation of this assembly in production, it will no longer be available.
7. "M" in Remark column indicates needed in the periodical maintenance.

MECHANICAL PARTS ASSEMBLY


Components identified with the mark  have the special characteristics for safety. When replacing any of these components, use only the same type.

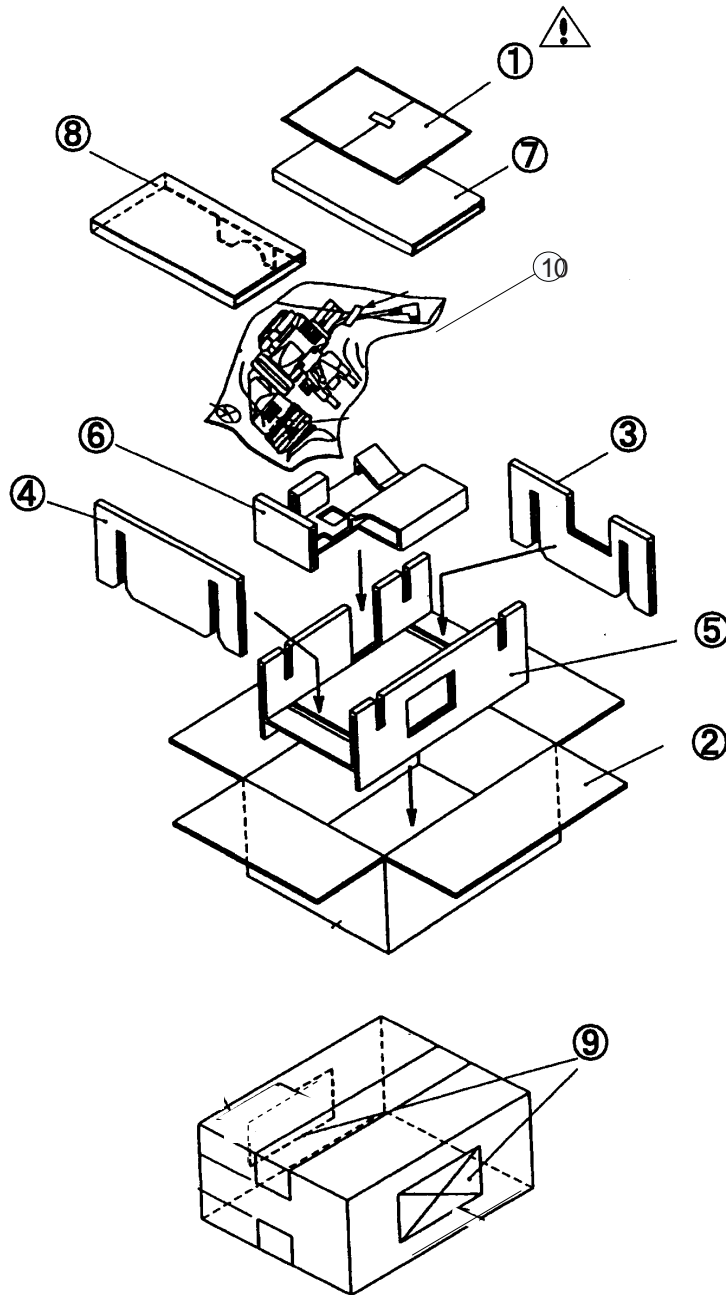


MECHANICAL PARTS ASSEMBLY

Ref.No.	Part No.	Part Name & Description	Pcs	Remarks	Ref.No.	Part No.	Part Name & Description	Pcs	Remarks
1	VYK1Z27	TOP CASE U	1						
2	VYK1X59	BOTTOM CASE U	1						
3	VYC0884	MIC MOUNT U	1						
4	VMC1513	PLATE SPRING (A)	1						
5	VKH0389	GUARD BAR	1						
6	VMG1217	CASE PACKING (1)	1						
7	VMG1218	CASE PACKING (2)	1						
8	VGU8170	TALLY KNOB	1						
9	VGQ5321	TALLY BASE	1						
10	VGL0837	BACK TALLY COVER	1						
11	VMG1219	BACK TALLY SHEET	1						
12	VEE1D20	VF CABLE	1						
15	VMG1225	SW PACKING	1						
16	VMZ2914	INSULATOR	1						
17	VHD1884	VR NUB	3						
18	VGU0A67	VR KNOB	3						
19	VEKOK61	CRT/DY CONNECTOR U	1	FOR AJ-HVF21G					
19	VEKOK62	CRT/DY CONNECTOR U	1	FOR AJ-HVF27BG					
20	VGH4923	DISPLAY PLATE	1						
21	VMZ2915	MASK SHEET	1						
22	VEE1C86	10P CABLE	1	(MAIN) -(LED)					
23	VMX2890	MASK SPACER	1						
24	VMG1221	LENS LOCK PACKING	1						
25	VMX3242	SLIP RING	1						
26	VGp6184	OUT SIDE HOLDER	1						
27	VYC0951	LENS CASE	1						
28	VMG1423-S	EYE CAP	1						
29	VFC4122	VR RAIL U	1						
30	VGM1655	LOCK TABLE	1						
31	XSB3+8VJK	SCREW	5						
32	XWA3BFJK	SCREW	3						
33	VMP7716	STOPPER BASE	1						
34	VMB3791	STOPPER RING	1						
35	VMS7411	STOPPER PIN	1						
36	VDL0965	UV FILTER	1						
37	VDL0963	VF MIRROR	1						
38	VMP6010	MIRROR GUIDE	1						
39	VMP6011	MIRROR PLATE	1						
40	VMG1449	MIRROR CUSHION	1						
41	VMC1514	LOCK SPRING	1						
42	VGQ9076	LOCK RING	1						
43	VMX2887	LOCK SPACER	1						
50	XSB4+12FJK	SCREW	2						
51	VHD1528	MIC HOLDER SCREW	1						
52	XWGV35D8G	WASHER	1						
54	VMX2885	SCREW WASHER	3						
55	XVE26+A8FZ	SCREW	5						
56	VHD1885	SCREW	2						
57	XQN2+A4FN	SCREW	2						
58	XXEV2W3FP	HEX SCREW	3						
59	XSB2+4FC	SCREW	4						
60	XQN2+A3FJK	SCREW	2						
61	XUC15FP	E-RING	1						
62	XTN2+6CFN	SCREW	1						
63	XTS2+5JFJK	SCREW	4						
64	XTN26+8CFJK	SCREW	2						
65	XTN2+7JFJK	SCREW	4						
E1	VEP29177A	MAIN P.C. BOARD	1	FOR AJ-HVF21G					
E1	VEP29177C	MAIN P.C. BOARD	1	FOR AJ-HVF27BG					
E2	VEP29178A	SUB 1 P.C. BOARD	1	FOR AJ-HVF21G					
E2	VEP29178B	SUB 1 P.C. BOARD	1	FOR AJ-HVF27BG					
E3	VEP29179A	SUB 2 P.C. BOARD	1	FOR AJ-HVF21G					
E3	VEP29179B	SUB 2 P.C. BOARD	1	FOR AJ-HVF27BG					
E4	VEP29176A	LED P.C. BOARD	1						
E5	VEP29180A	SUB 3 P.C. BOARD	1						

PACKING PARTS ASSEMBLY

Components identified with the mark  have the special characteristics for safety. When replacing any of these components, use only the same type.



PACKING PARTS ASSEMBLY

Ref.No.	Part No.	Part Name & Description	Pcs	Remarks	Ref.No.	Part No.	Part Name & Description	Pcs	Remarks
<u>1</u>	VQT0X77	OPERATING INSTRUCTION	1		9	VQL1K00	PACKING LABEL	2	
2	VPG0A71	PACKING CASE	1		10	KH82-08	PROTECT BAG	1	
3	VPN5247	CUSHION A	1						
4	VPN5248	CUSHION B	1						
5	VPN5249	CUSHION C	1						
6	KH4A-10	CUSHION D	1						
7	VPN5251	CUSHION E	1						
8	VPN5252	CUSHION F	1						